

# Taizhou Tonhe Flow Control Equipment Co., Ltd

Email:tohe08@china-tonhe.com Skype:meizi2661 Whatsapp:+86-13676642305

## Tonhe A20-T8-B2-C MOTORIZED BALL VALVE

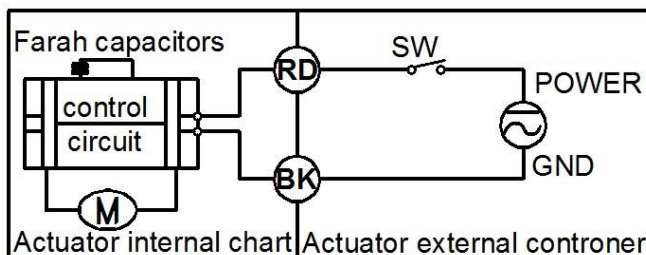


### Technical Parameters

Product size	□NPT 1/4"
Maximum working pressure	1.0MPa
Circulation medium	Fluid, air
Rated voltage	AC/DC9-24V
Wiring control methods	CR2-02 normally closed
Working current	≤500mA
Open/close time	≤5S
Life time	100000 times
Valve Body material	□Brass
Actuator material	Engineering Plastics
Sealing material	FKM & PTFE
Actuator rotation	90°
Max. torque force	2 N.M
Cable Length	0.5m
Environment temperature	-15℃～50℃
Liquid temperature	2℃～90℃ (Brass valve)
Indicator	□Yes
Protection class	IP67
Certificate	CE(LVD EMC),ROHS
Company passed	Iso9001:2008

### Wiring diagram

#### CR2 02 Wiring Diagram ( 2 wires control – Power reset function) normally closed



·When SW is CLOSED, the valve OPEN, the actuator automatically power off after in place.

·When SW is OPEN, the valve CLOSED, the actuator automatically power off after in place.

\* Suitable Working Voltage: AC/DC9-24v

\* Exceeding the working voltage is forbidden